

- Holland, G. P. and A. H. Benton. 1968. Siphonaptera from Pennsylvania mammals. *Amer. Midl. Natur.* 80:252-261.
- Jackson, H. H. T. 1961. *Mammals of Wisconsin*. Univ. Wisconsin Press, Madison. xii + 504 pp.
- Johnson, P. T. and R. Traub. 1954. Revision of the flea genus *Peromyscopsylla*. *Smithson. Misc. Collns.* 123(4):1-68.
- Jordan, K. and N. C. Rothschild. 1920. On American bird-*Ceratophylli*. *Ectoparasites.* 1:65-76.
- Knipping, P. A., B. B. Morgan, and R. J. Dicke. 1950. Preliminary list of some fleas from Wisconsin. *Trans. Wisc. Acad. Sci. Arts Let.* 40:199-206.
- Lawrence, W. H., K. L. Hays, and S. A. Graham. 1965. Arthropodous ectoparasites from some northern Michigan mammals. *Occ. Pap. Mus. Zool. Univ. Mich.* No. 639. 7 pp.
- Smit, F. C. A. M. 1957. New hystriochopsyllid Siphonaptera. *Bull. Brit. Mus. (Nat. Hist.) Entomol.* 6:39-76.
- . 1969. A catalogue of the Siphonaptera of Finland with distribution maps of all Fennoscandian species. *Ann. Zool. Fenn.* 6:47-86.
- Thompson, P. H. 1966. Arthropods from nests of the house sparrow. *Proc. Entomol. Soc. Wash.* 68:44-48.

**PARAPYCNODERES, A NEW GENUS FOR PYCNODERES
PORRECTUS (DISTANT) (HEMIPTERA: MIRIDAE)**

J. MALDONADO-CAPRILES

Department of Biology, University of Puerto Rico at Mayagüez, Mayagüez,
Puerto Rico, 00708

Examination of the genitalia of the male of *Pycnoderes porrectus* (Distant) shows that this species, although having the general appearance of a *Pycnoderes*, belongs in a separate genus herein described as new. The male studied, identified by J. C. M. Carvalho and deposited in the British Museum (N.H.) and kindly loaned to me by Mrs. G. M. Black, has been declared the type of the genus.

In the measurements that follow, 26 micrometer units are equivalent to 1.0 mm. Support for this study was made possible by National Science Foundation grant GB-7382.

Parapycnoderes Maldonado-Capriles, new genus

Type of the genus: *Pycnoderes porrectus* (Distant) 1893.

Bryocorinae, Bryocorini. Habitus as in fig. 9. Thorax and forewing with dense, silvery, decumbent, silky pubescence. Pronotum densely pitted. Head somewhat

roundly produced between bases of antennae; vertex slightly convex, corrugate on each side of median line; eyes small, projecting laterally beyond anterior margin of pronotum, sessile, contiguous to collar. Beak reaching mesocoxa. Antenna inserted adjacent to eye on infero-frontal angle; slender, first segment thickest, others gradually thinner, first segment equal in length to interocular width, second slightly over 1.6 times as long as first, third 1.5 times as long as first, fourth as long as first and third combined. Pronotum with long collar, collar slightly longer than calli; calli developed, polished; posterior lobe inflated, gibbous, gibbositities well separated; posterior margin slightly and broadly concave above scutellum. Scutellum triangular, shorter than wide, horizontal, medianly depressed. Hemelytra ornamented with grayish white; broadly oval, opaque, with broad flat embolium; cuneus wider than long; membrane semitranslucent, with 1 subquadrate cell. Legs long and slender, tarsi thickened toward apex; arolia absent, pseudoarolia arising from ventral surface of claws. Abdomen broad at base.

Parapycnoderes runs to couplet 48 in Carvalho's key to the Bryocorini genera of the world. Although it looks more like a *Pycnoderes*, the new genus keys out together with *Cyrtocapsus* on account of the silky pubescence of the latter. Carvalho's key can be modified to include the new genus as follows:

48. Hemelytra with embolium narrow 48a
 Hemelytra with embolium broad 49
- 48a. Hemelytra and pronotum covered with silky pubescence; eyes reaching back to sides of anterior margins of pronotum *Cyrtocapsus* Reuter
 Hemelytra and pronotum with fine delicate pubescence; eyes produced laterally, not backwardly *Sixeonotus* Reuter
49. Collar longer than calli; margins of hemelytra broadly oval; cuneus wider than long; forewings and pronotum with silky pubescence *Parapycnoderes* n. gen.
 Collar shorter, inconspicuous; margins of hemelytra subparallel or slightly oval; cuneus longer than wide; forewings and pronotum with fine pubescence *Pycnoderes* G. & M.

Parapycnoderes porrectus (Distant) new combination

Pycnoderes porrectus (Distant) 1893. Biol. Cent. Amer. Rhync.:441.

Redescription of male: coloration typical of the genus, that is, blackish with grayish-white appendages and ornamentation of forewings. Head, thorax, and scutellum black; brown along vertex on each side of median line. First antennal segment dark brown with grayish-white base and apex; second segment pale stramineous and very slightly darkening towards apex, third slightly darker than second, fourth brownish. Beak grayish white. Legs including coxae grayish white; midfemur brownish on apical half; hind femur brownish except basally; hind tibia brown postbasally. Forewing blackish brown; embolium with a post-basal and an apical grayish-white spot; cuneus apically, apical $\frac{1}{2}$ of cell of membrane, and remainder of membrane ivory. Freshly caught specimens probably have silvery areas on the forewing as the appearance of the wing is similar to old specimens of *Pycnoderes* in which these areas are lost.

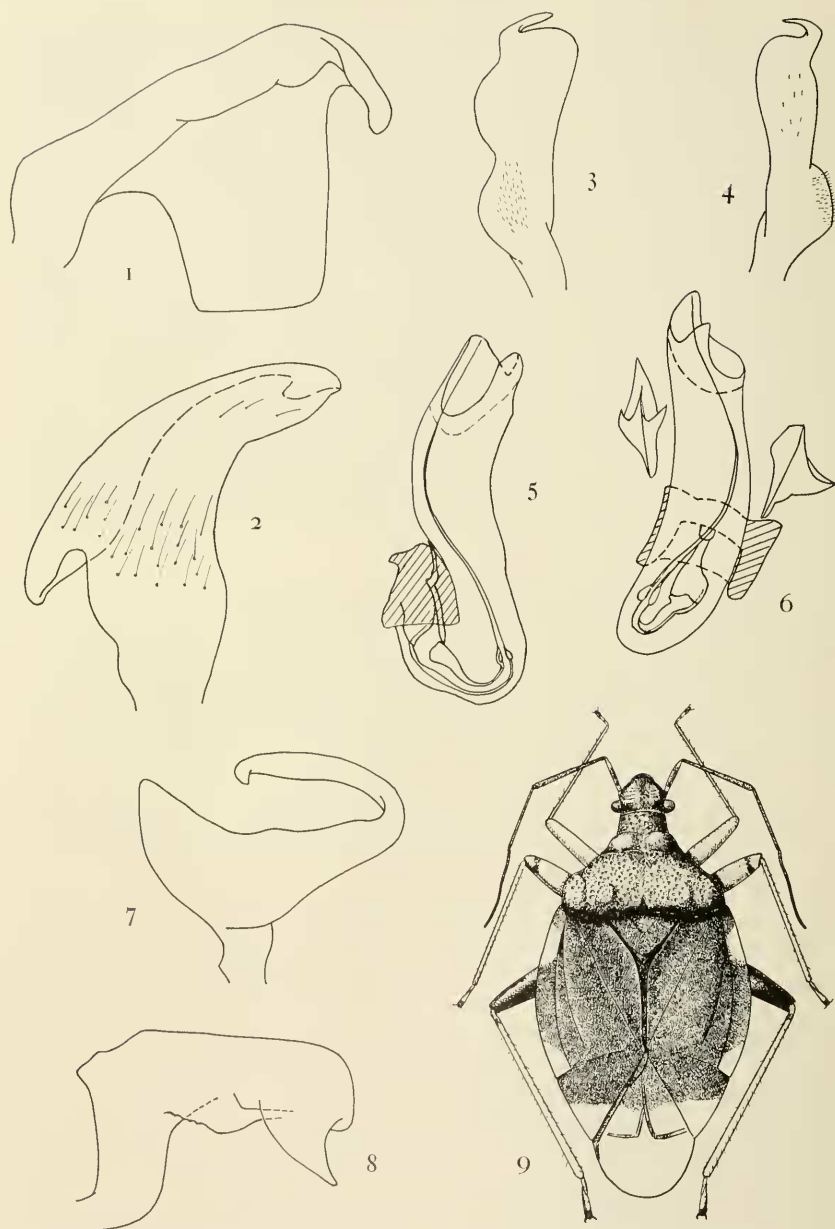


Fig. 1-6, 9, *Parapycnoderes porrectus*, male: 1, right clasper, lateral view; 2, same, dorsal view; 3, left clasper, ventral view; 4, same, lateral view; 5, penis, lateral view; 6, same, dorsal view; 9, habitus. Fig. 7-8, *Pycnoderes heidemanni*, male: 7, left clasper, lateral view; 8, right clasper, ventral view.

Vertex convex, with row of 6-8 transverse striations from midlength of eyes to before antennal base on each side of median line; tylus elevated, convex. Length of head 18, width across eyes 16, interocular space 9. Antennal segments 9:16:13:22. Eyes small. Collar slightly longer than calli (5.5:5), pitted. Calli polished. Pronotum as described for the genus; length 25, posterior width 36. Scutellum above level of forewings, as illustrated, apex of membrane surpassing tip of abdomen. Length 4.5 mm.

Genitalia as in fig. 1-6.

Holotype, ♂, Capetillo, Guatemala, Central America; G. C. Champion collector, Distant collection 1911-383, in the British Museum (N.H.), London.

The genus is monotypic. As stated above, this species has the general appearance of the broad-winged species of *Pycnoderes* but can be easily separated from these by the very broad oval forewings, longer collar, wider cuneus, silky pubescence, and the genitalia.

REFERENCES

- Carvalho, J. C. M. 1955. Chaves para os generos de mirideos do Mundo (Hemiptera). Bol. Mus. Paraense Emilio Goeldi. 11(2):1-151.
Distant, W. L. 1880 (1883, 1884, 1893)—Biologia Centrali Americana Insecta. Rhynchota. Hemiptera-Heteroptera. Supplement: pp. 304-462, 1884-1893.

A NEW SYNHALONIA FROM NEW MEXICO (ANTHOPHORIDAE)

P. H. TIMBERLAKE

Division of Biological Control, University of California, Riverside, California 92502

ABSTRACT—A new species, *Synhalonia bakeri*, is described from Aztec, New Mexico.

A new species of *Synhalonia* was collected by Carl F. Baker in 1899 at Aztec, New Mexico. In my key to the species of *Synhalonia* (Univ. Calif. Publ. Ent. 57:1-76) it runs to couplet 72, distinguishing *quadricincta* and *albescens*, and it agrees closely in aspect to the latter species. It differs in having the hair of the abdomen more uniformly distributed and the third joint of the antennae much longer.

Synhalonia bakeri Timberlake, new species

Male: Black, with dot at base of mandibles, labrum, and clypeus, and line on supraclypeal area pale yellow. Clypeal mark almost touching margin of eyes,